



Welcome to Fukuoka, Japan !

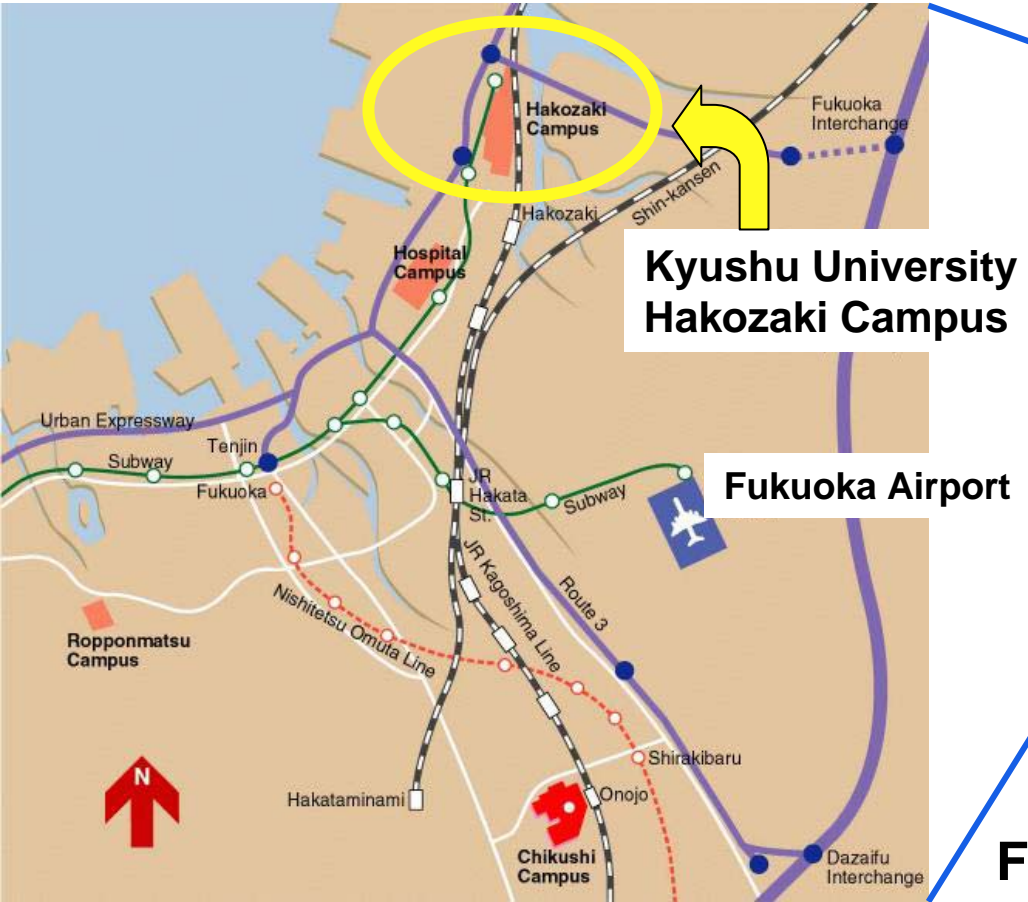
Plant Neurobiology 2008

6 - 9 June, 2008

Kyushu University Fukuoka, Japan

Takashi YUASA
Co-Chairman,
Kyushu
University

Tomonori KAWANO
Co-Chairman,
The University
of Kitakyushu



**Kyushu University
Hakozaiki Campus**

Fukuoka Airport

Fukuoka



Kyushu University Hakozaiki Campus



A Rice Field in Hakozaiki Campus



Hakozaiki Shrine and the Sacred Arch in the neighborhood of Kyushu Univ.



**Faculty of Agriculture(above)
Faculty of Sciences(below)**



**The Entrance & University Office (above)
Faculty of Engineering (below)**



The Conference Hall for the 4th Symposium on Plant Neurobiology



Kyushu University Hakozaeki Campus Map

How to access to Kyushu University, Fukuoka?

From Fukuoka Airport:

by Taxi (approx. 20 min.) Fukuoka Airport > Hakozaki campus

by Subway (approx. 30-40 min.)“Fukuoka Airport” > get off at “Nakasu-Kawabata”
(transfer to the train bound for “Kaizuka”) > get off at “Hakozaki-Kyudaimae”

> 10 min. walk to the International Conference Hall



Kyushu Area of Japan



An inside View of the International Hall of the Kyushu University

The International Hall is located behind the International Affair Departments of the Kyushu University (Photo) in Hakozaki.



Brief History of Kyushu University (Faculty of Agriculture and Sciences)

1903 - Fukuoka Medical College established, which later became the foundation of Kyushu Imperial University

1919 - College of Engineering reorganized as the Faculty of Engineering
Faculty of Agriculture

1939 - Faculty of Sciences established

2015 - Faculty of agriculture will move to ITO Campus



Kaizuka Campus at 1925



Kaizuka Campus at present



The Future Campus at Ito
(Eastern Area of Fukuoka City)

BioResources at Kyushu University



Flower morphology mutants
of Morning glory

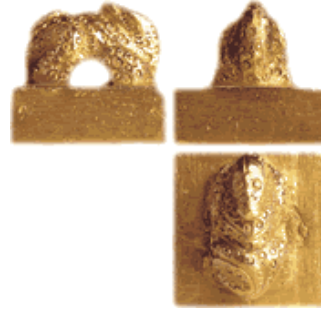


Rice mutant collection



Silk worm mutants

Attractions of Fukuoka and other Kyushu Area



Mt ASO in Kumamoto Pref., The biggest crater in the world Gold Seal(Kin-In)

Fukuoka City Museum



Dazaifu Tenmangu shrine

Kushida Shrine

Hot spring



Sweet flag



Flower garden in Hakozaiki shrine



Kyushu National Museum